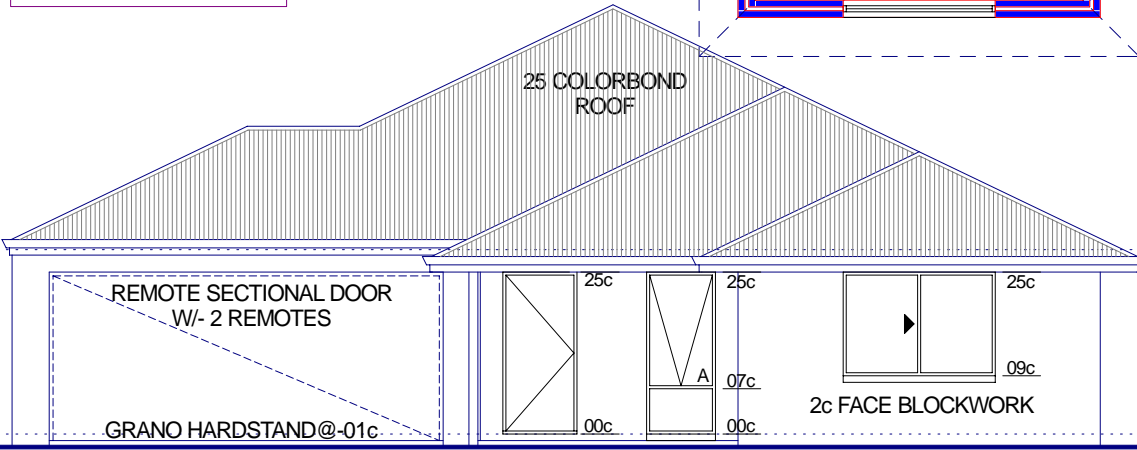


Area:

Living.....	173.96m ² (73.36m PERIM)
Alfresco/Verandah.....	34.55m ²
Garage.....	37.41m ²
Porch.....	5.95m ²
Total.....	251.87m²
Roof area.....	275.84m ²



Front Elevation 1:100

GRH Designs

E-mail: grhdesigns@earthlink.net.au
8 Ford Street, Woodbridge, 5006
Ph: 0819 800 712

Creating innovative & practical designs that are inspired by your dreams and vision.

Midcoast Homes Builders

We strive to provide quality - we DON'T open it!

SERVICING JURIE BAY, GREENHEAD & CERVANTES

Phone 08 9452 2707 - Mobile 0408 526 771
Fax 08 9452 2708 - Email midcoasthomes.net.au
1 Dorcas Street, Jurie Bay - PO Box 672, Jurie Bay, WA 6103

The Seahawk